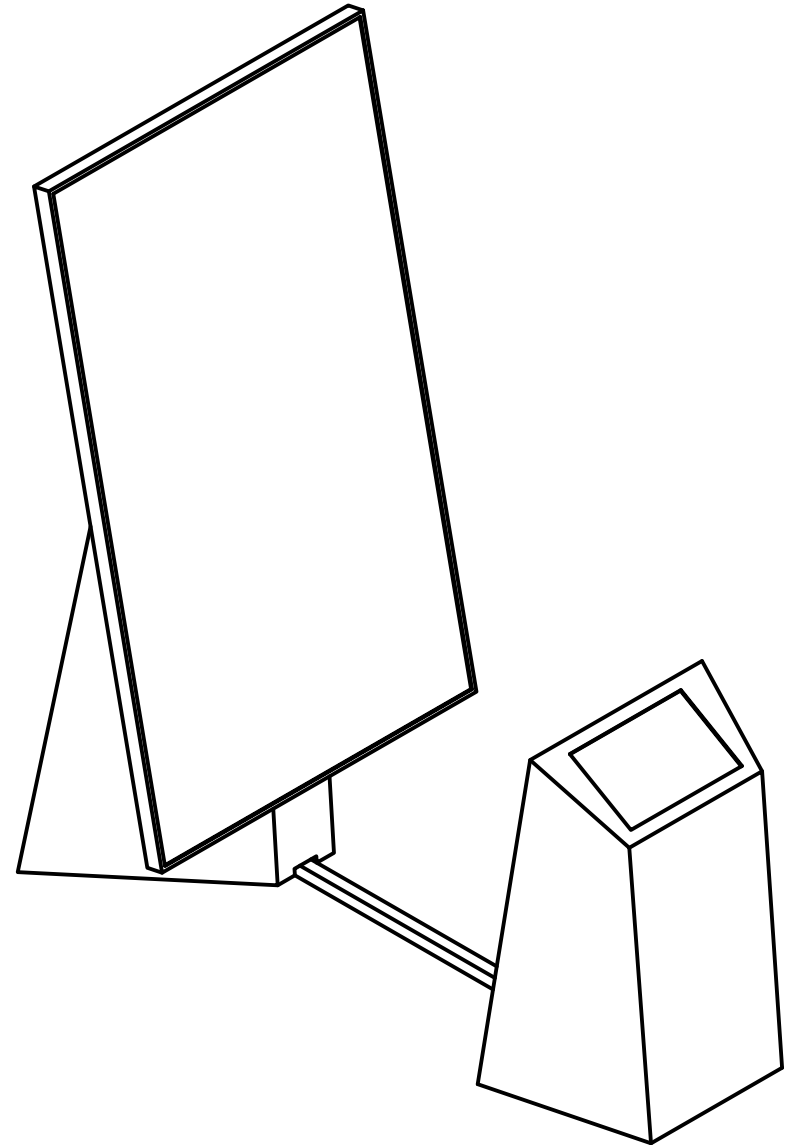
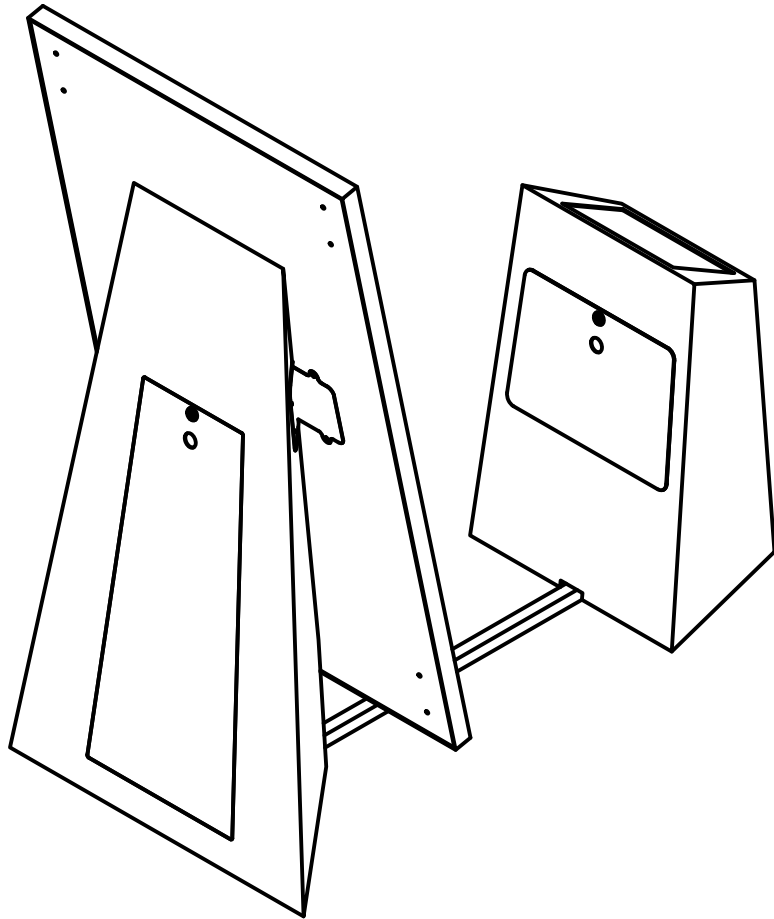
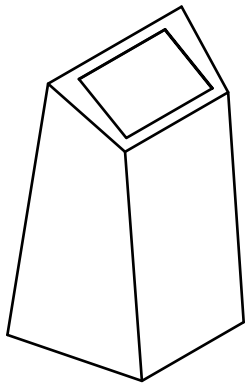


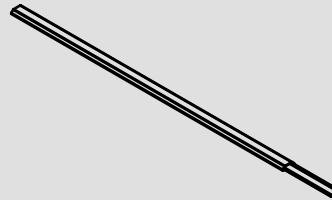
# Model Viewer Install Guide



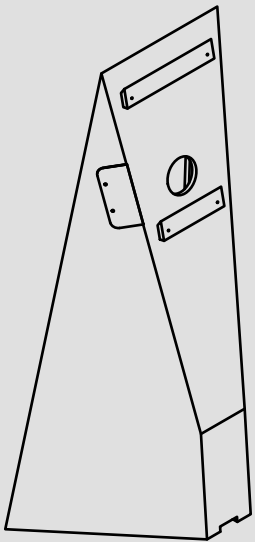
# Case Contents



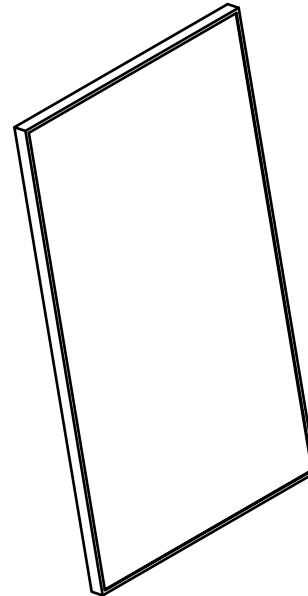
Touch Pedestal × 1



4 Cable Chase × 1



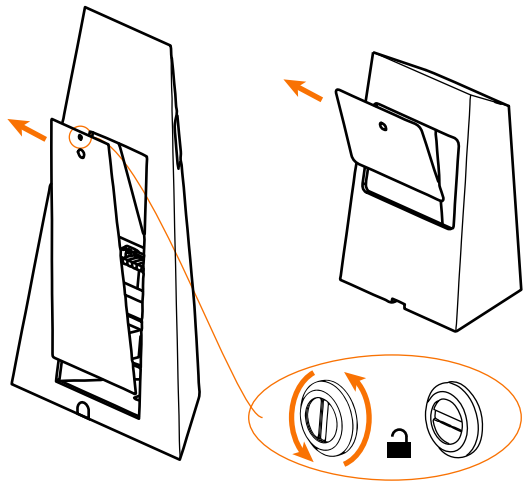
Screen Pedestal × 1



Screen Assembly × 1

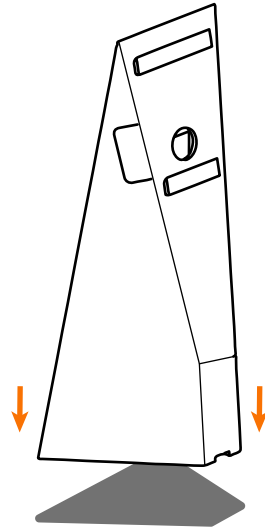


1



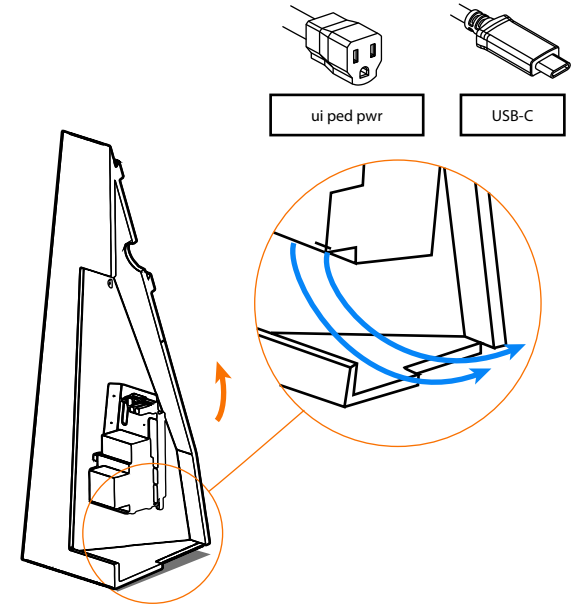
Unlock the doors on both pedestals and remove them. Unplug the two fans on the screen pedestal back panel where the barrel jacks meet.

2



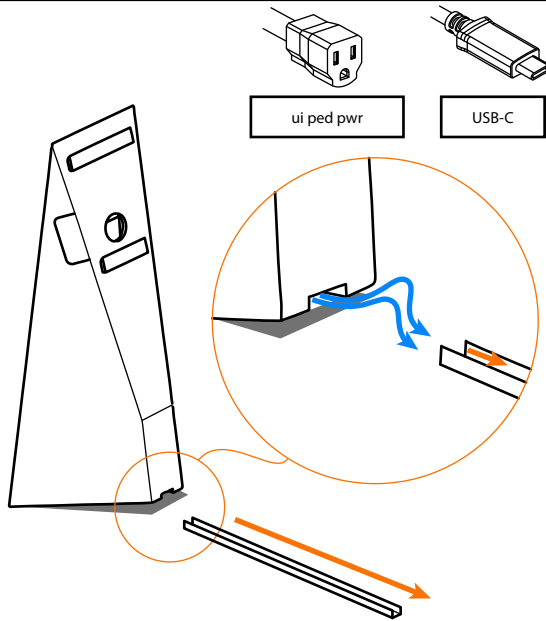
Place the screen pedestal in the desired location.

3



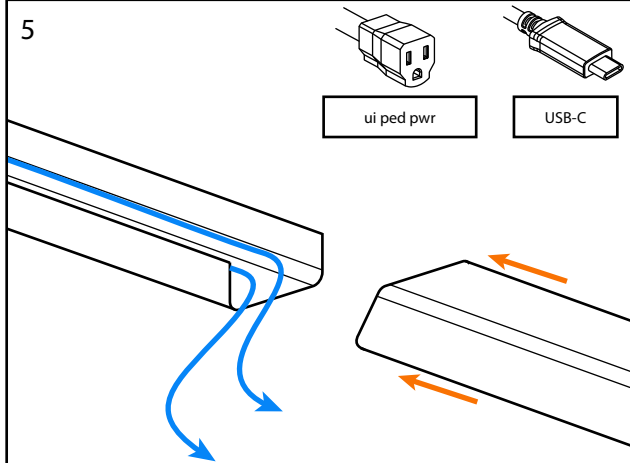
Tip the screen pedestal back and Route the USB and power cables out through the opening in the bottom front.

4



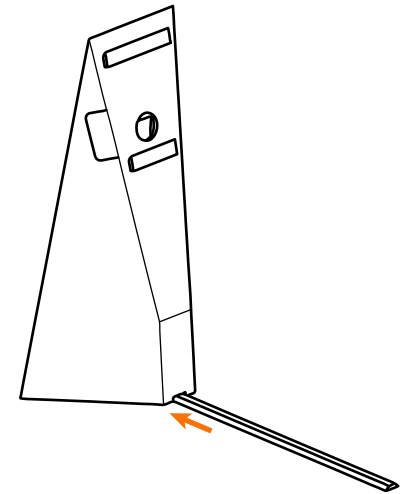
Run both cables out through the bottom of the cable chase.

5



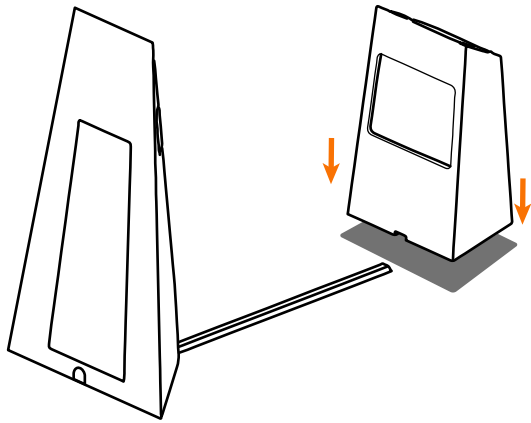
Install the cover on the cable chase.

6



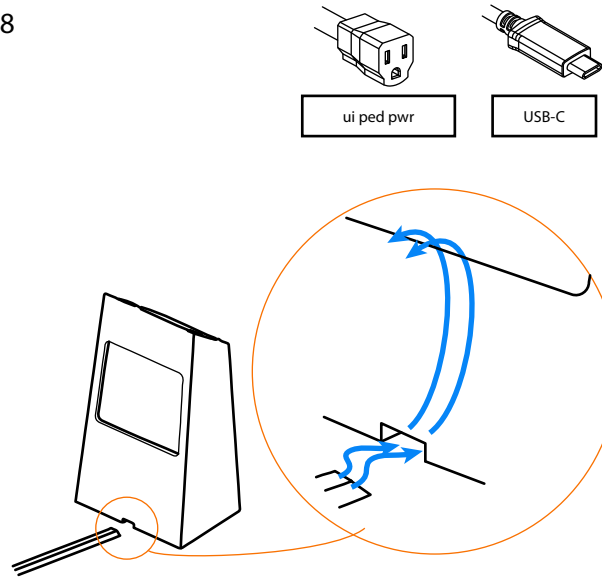
Insert the cable chase into the opening at the bottom front of the screen pedestal.

7



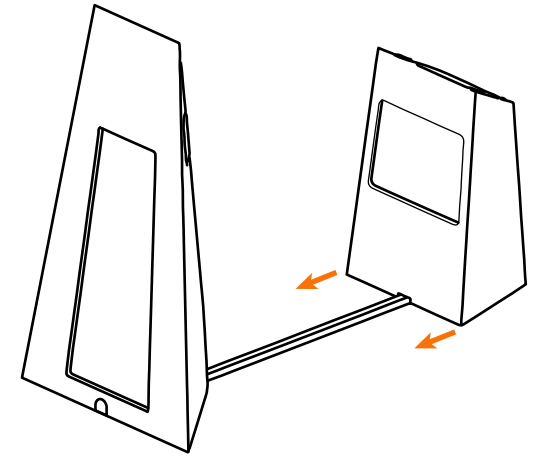
Set the touch pedestal past the other end of the cable chase.

8



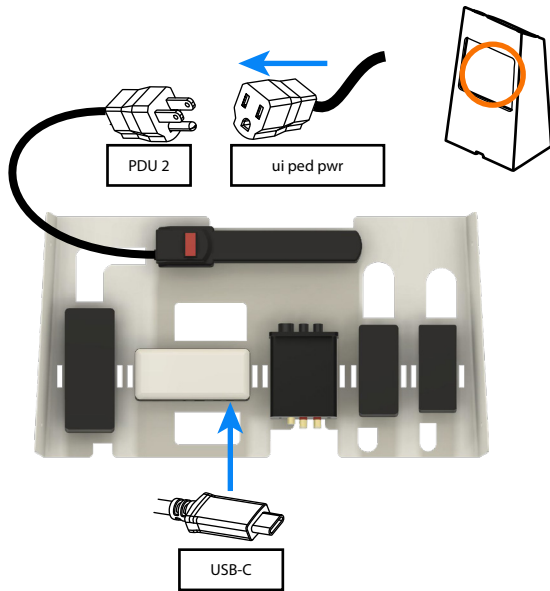
Route the cables from the cable chase into the bottom of the touch pedestal and out of the large opening.

9



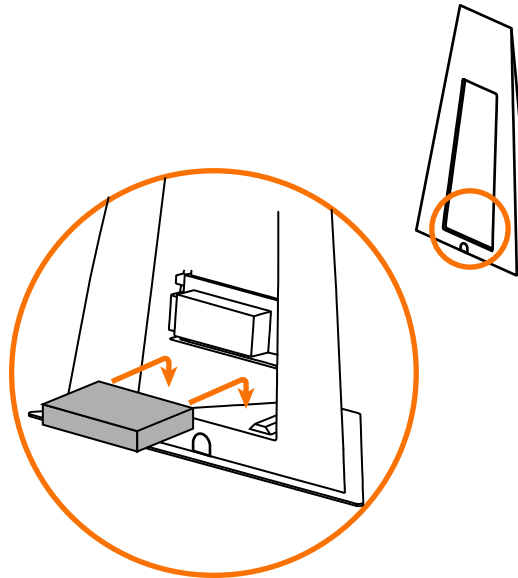
Slide the touch pedestal onto the cable chase and determine its final placement.

10



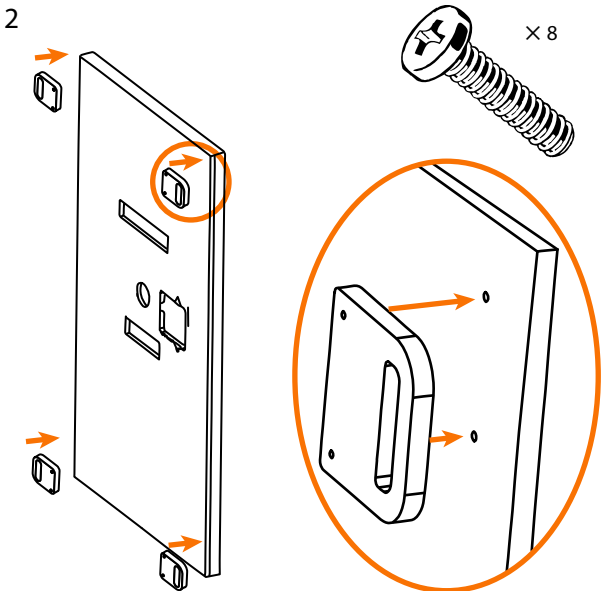
Connect the USB and power cables inside the touch pedestal as shown.

11

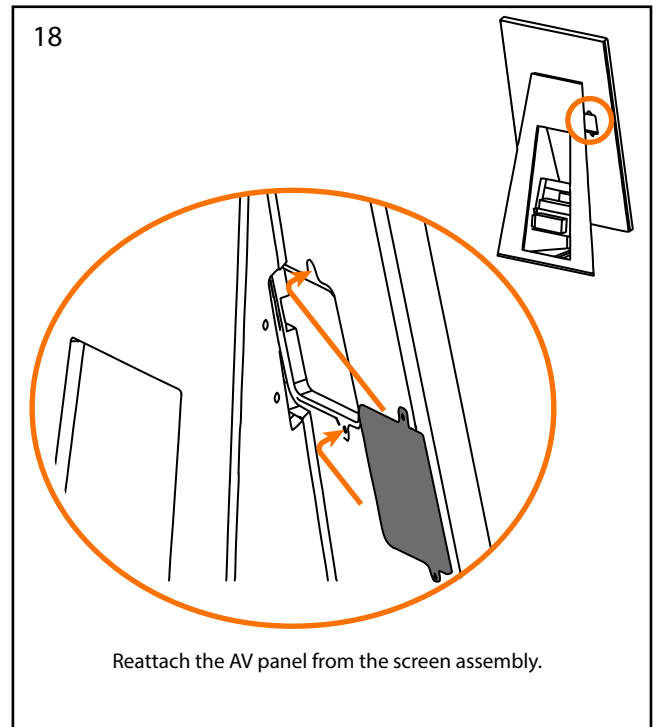
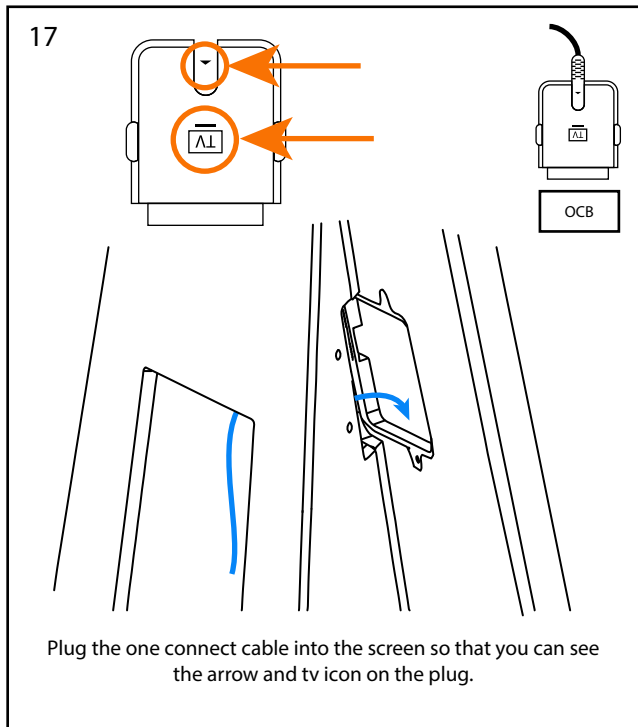
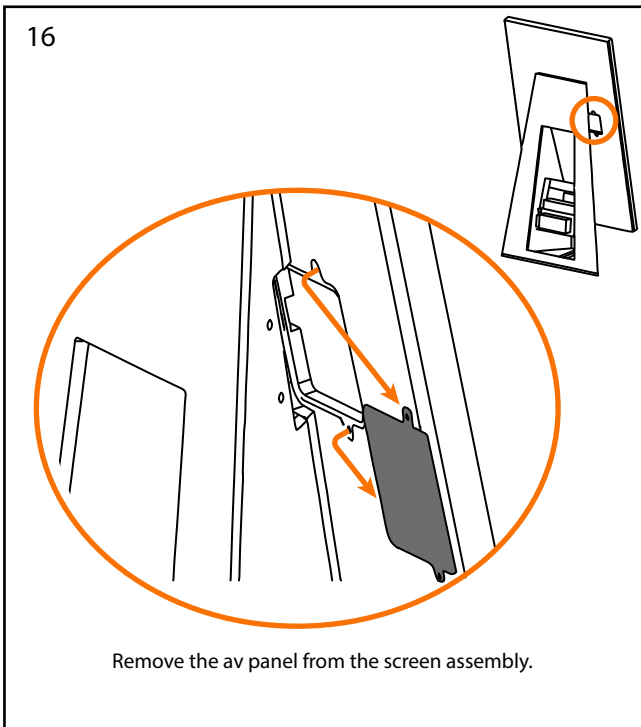
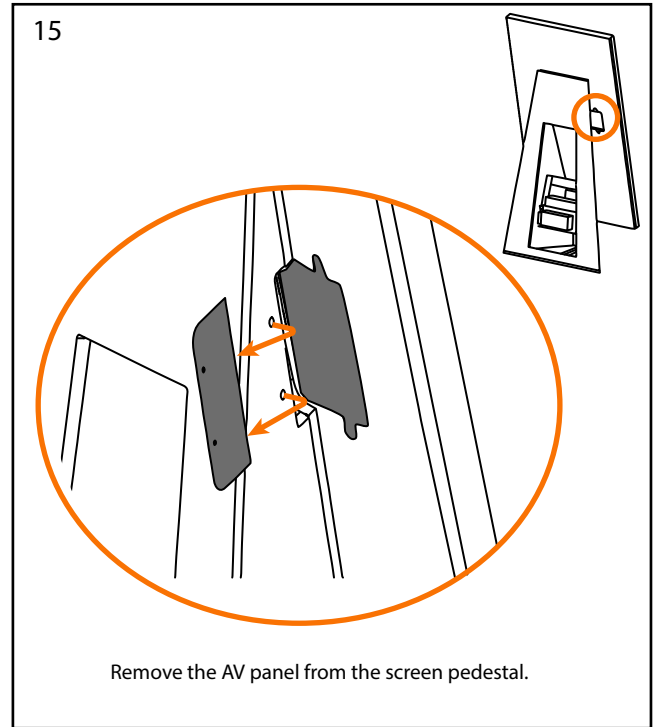
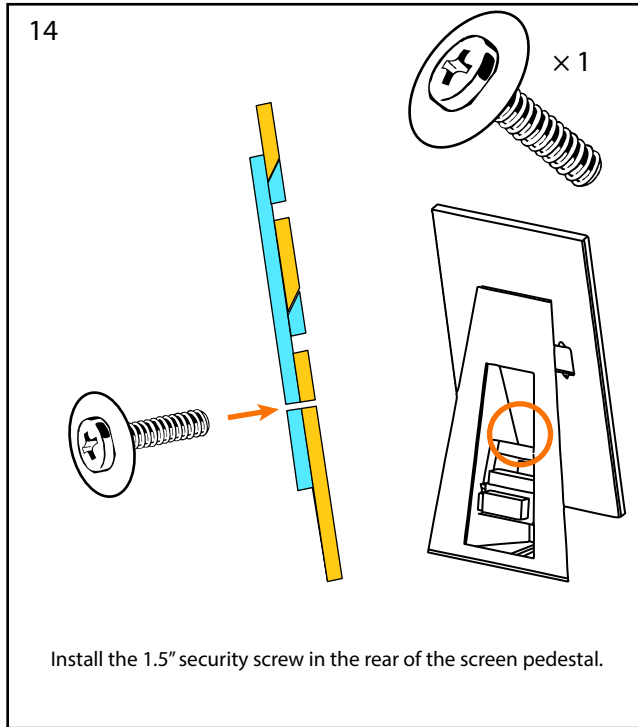
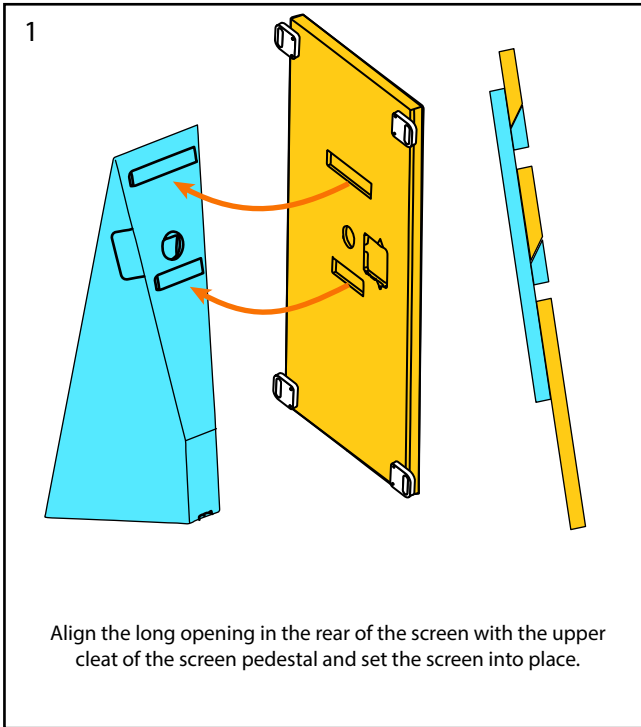


Set the ballast weights flat onto the floor of the screen pedestal. Be careful not to place them on top of and cables!

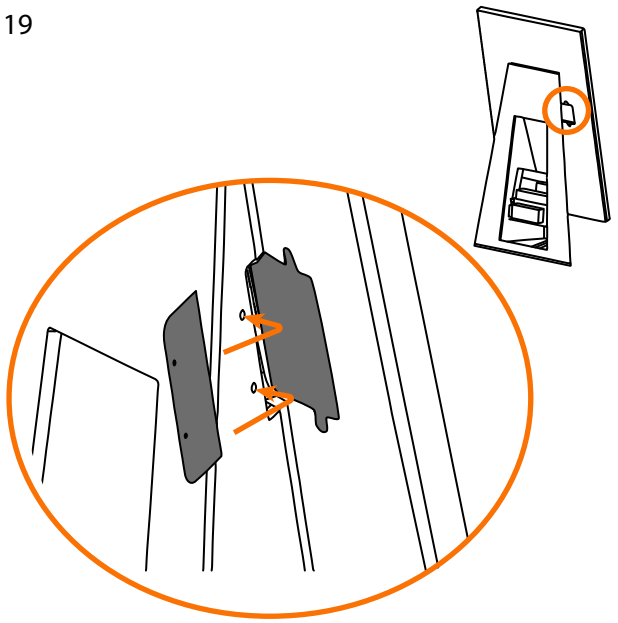
12



Use the provided 1.5" hardware to install the handles on the back of the screen assembly.

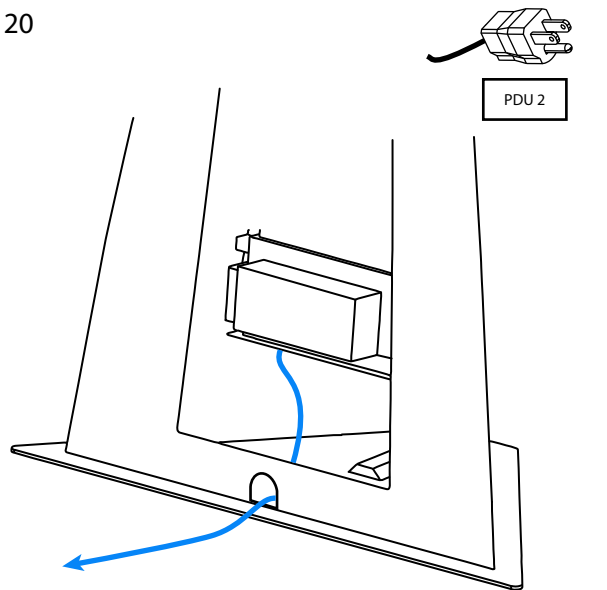


19



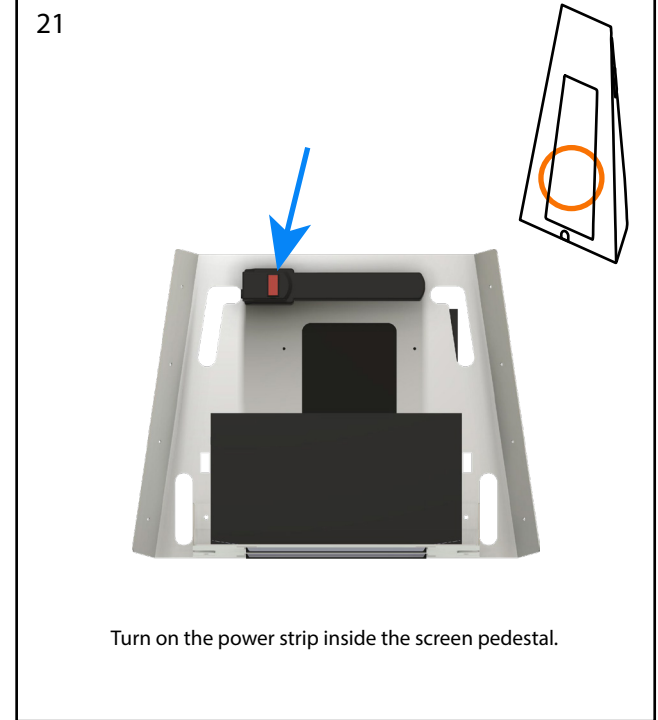
Reattach the AV panel to the screen pedestal.

20



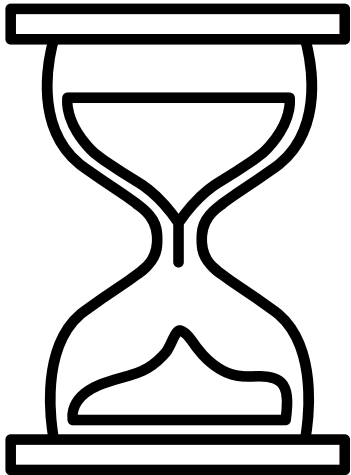
Route the power cable out through the mouse hole in the rear of the screen pedestal and plug in the unit.

21



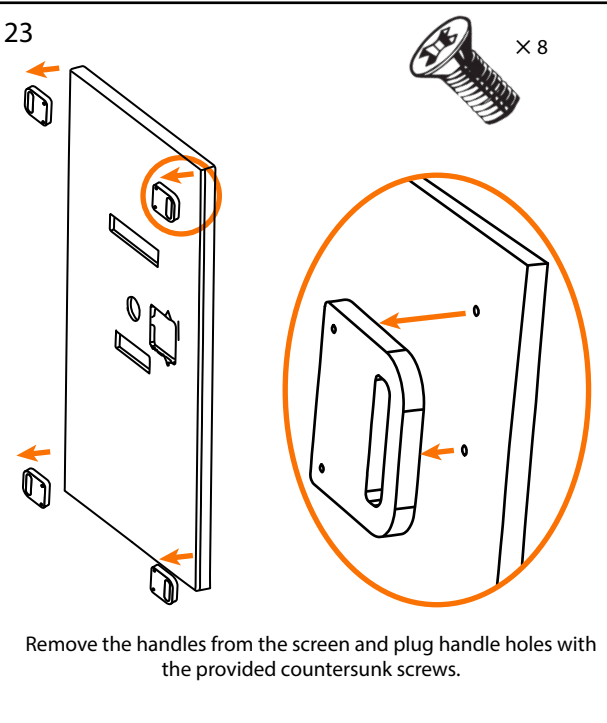
Turn on the power strip inside the screen pedestal.

22



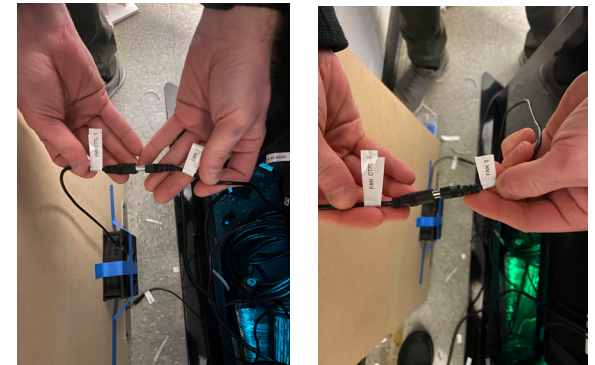
The unit should now power on. If the unit does not power on, see the troubleshooting guide.

23



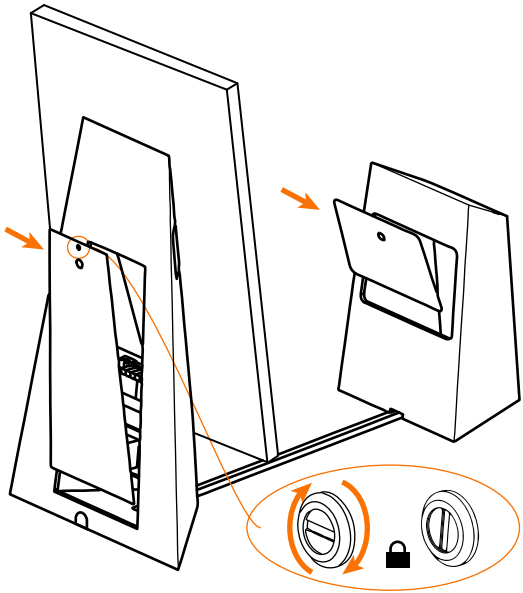
Remove the handles from the screen and plug handle holes with the provided countersunk screws.

24



Replug the two fans on the screen pedestal back panel into the main unit. Make sure to plug the cables labeled for fan 1 into one another and the cables labeled for fan 2 into one another.

25



Replace and lock the doors on both pedestals.

COMPLETE