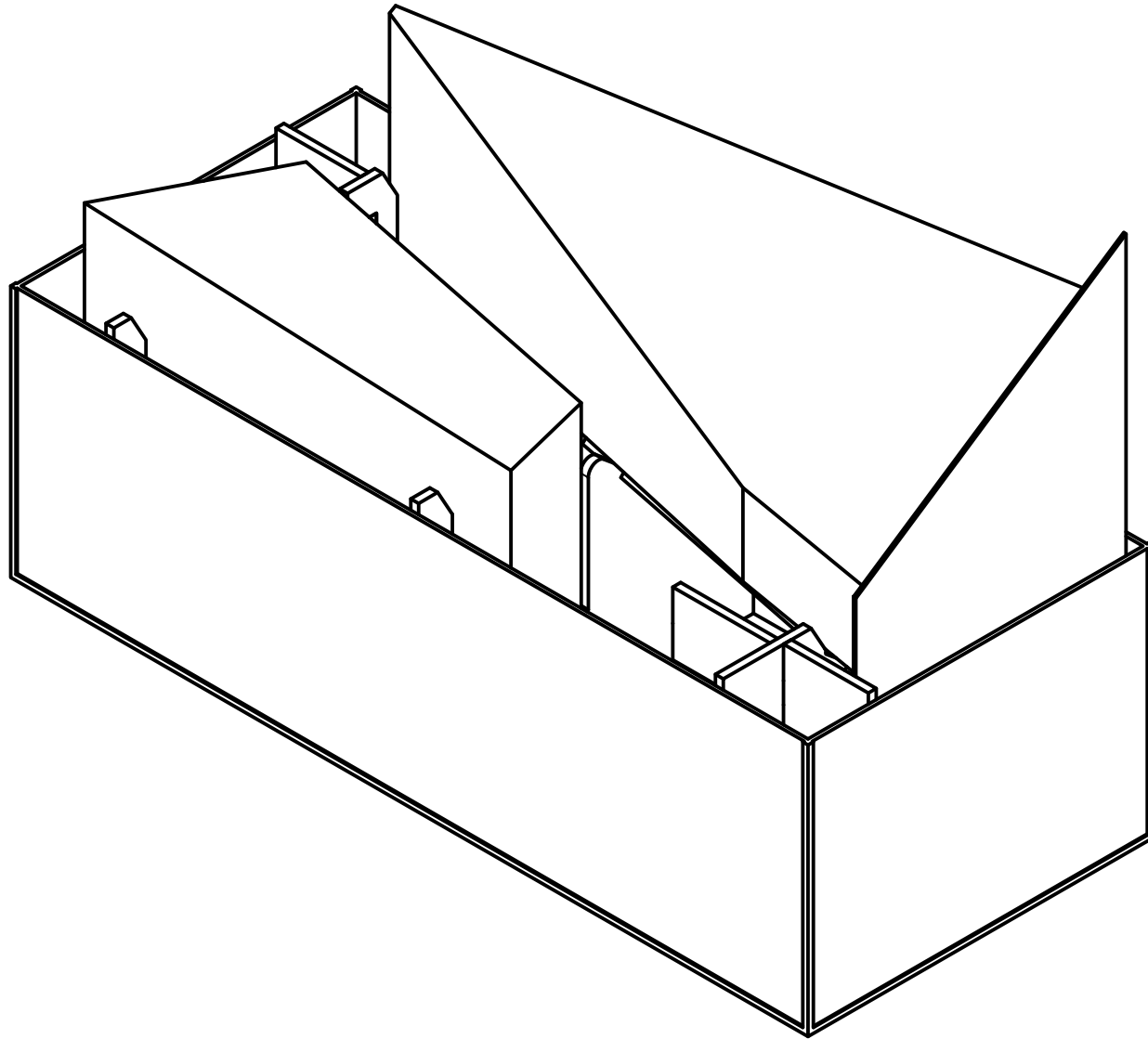
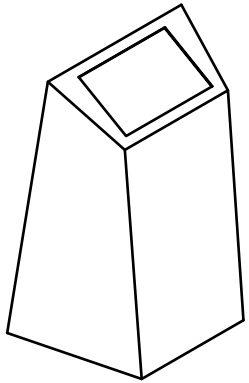


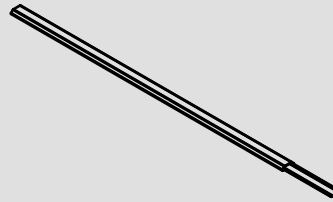
Model Viewer Packing Guide



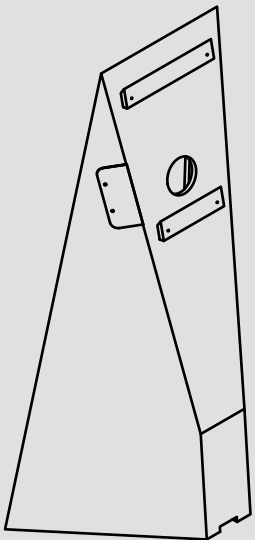
Case Contents



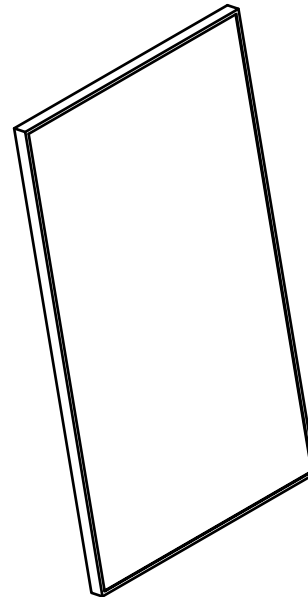
Touch Pedestal × 1



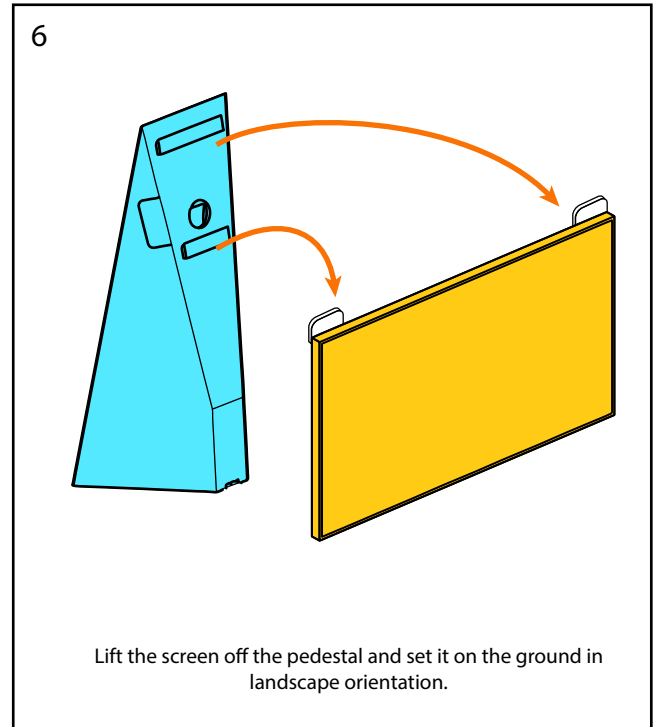
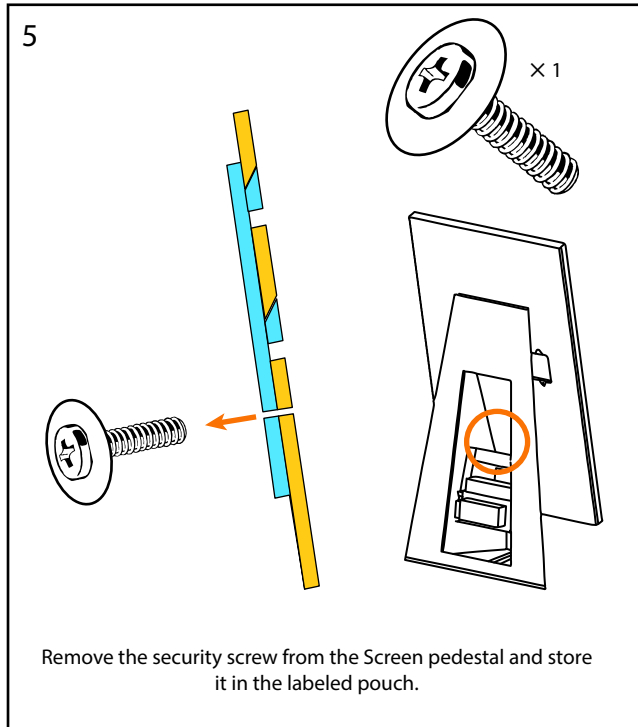
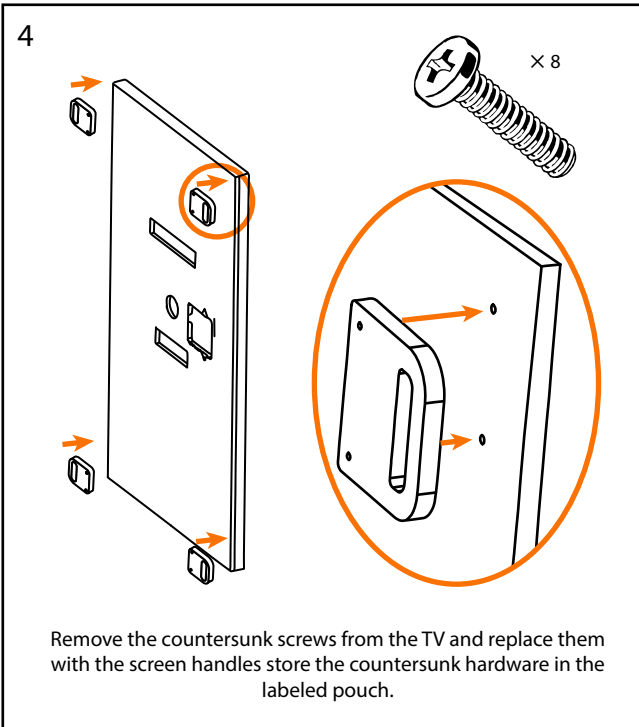
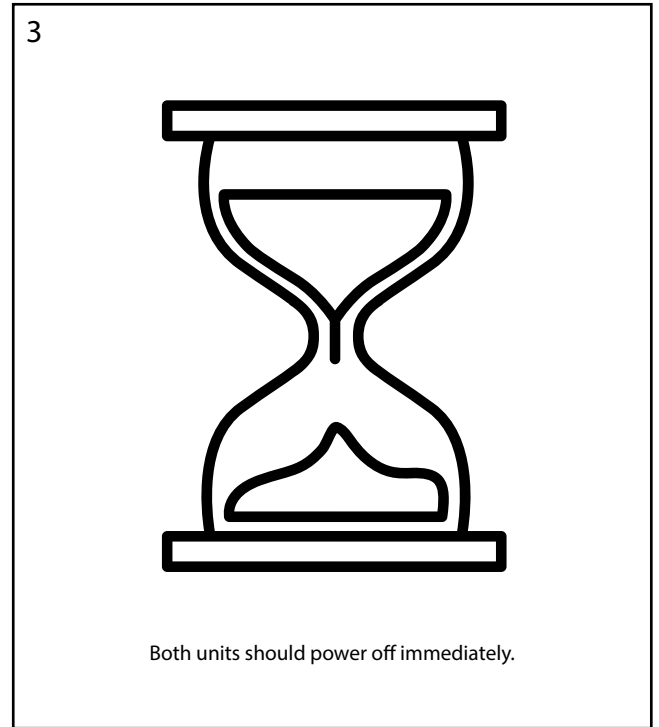
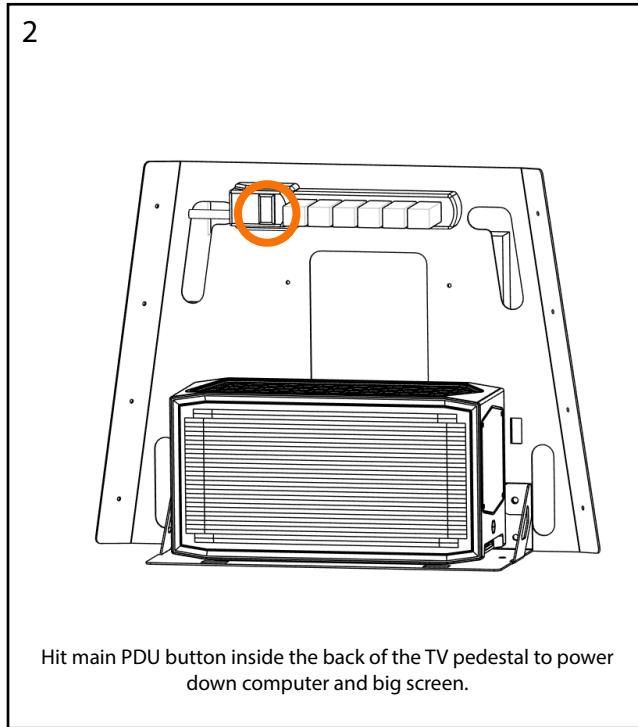
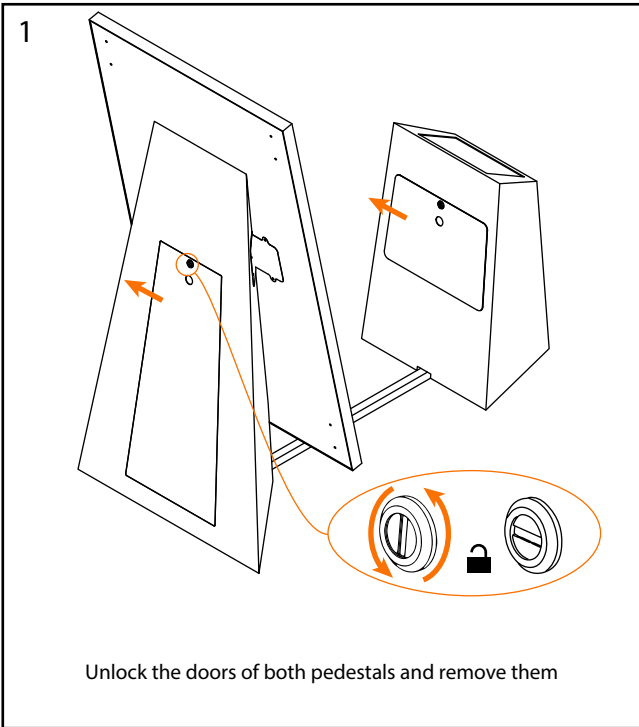
4 Cable Chase × 1



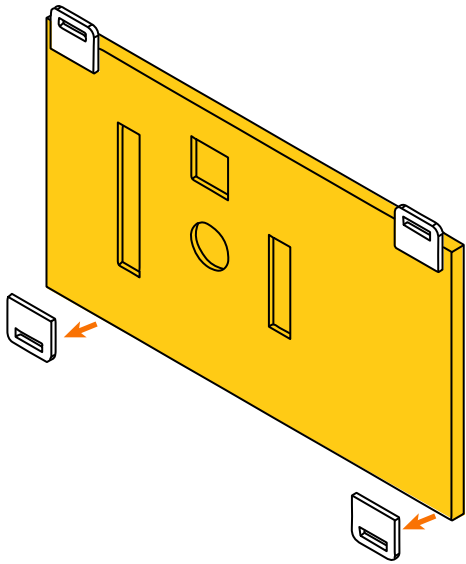
Screen Pedestal × 1



Screen Assembly × 1

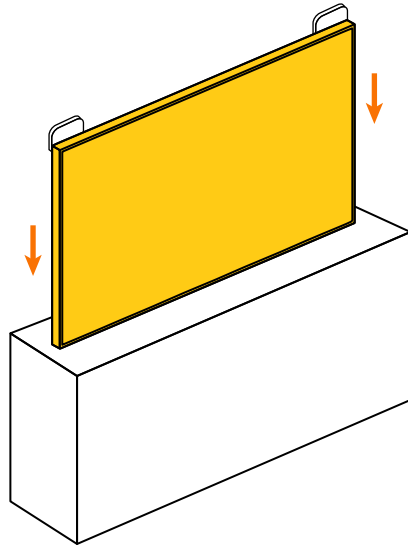


7



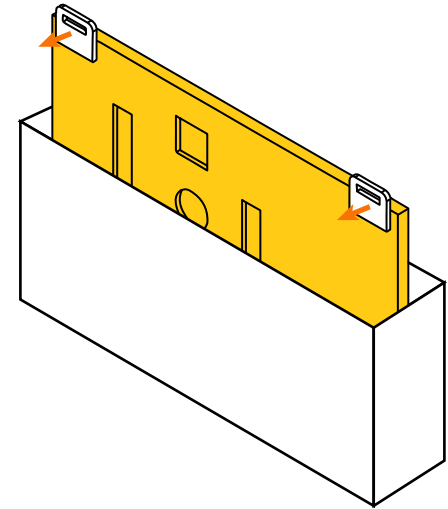
One at a time, remove the handles from the bottom of the screen.

8



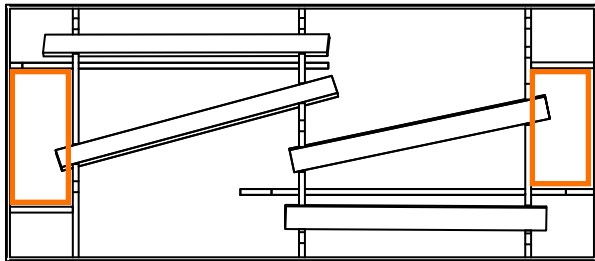
Use the two top handles to load the screen into the screen road case.

9



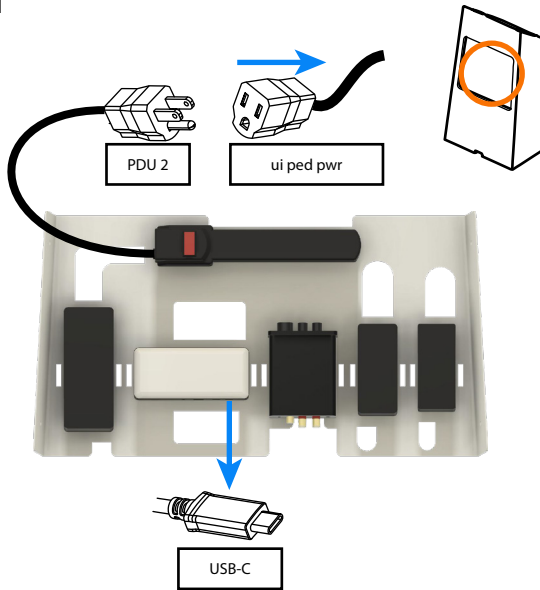
Remove the top handles
stow the handles in the pedestal case and the hardware in the labeled bag.

10



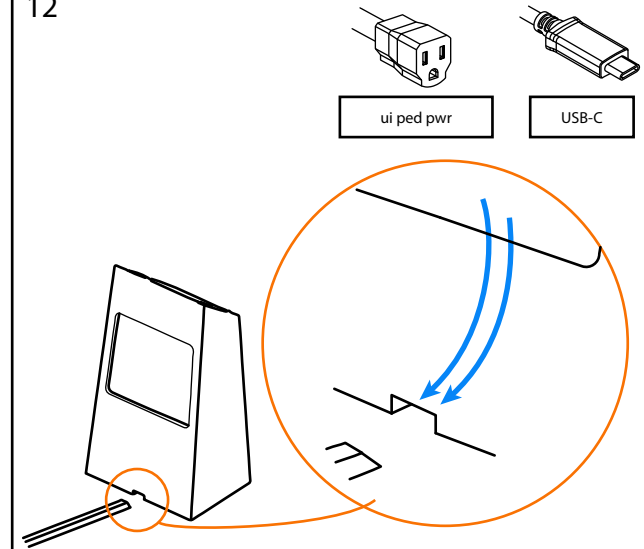
Remove the ballast weights from the screen pedestal and place them in the pedestal case as shown.

11



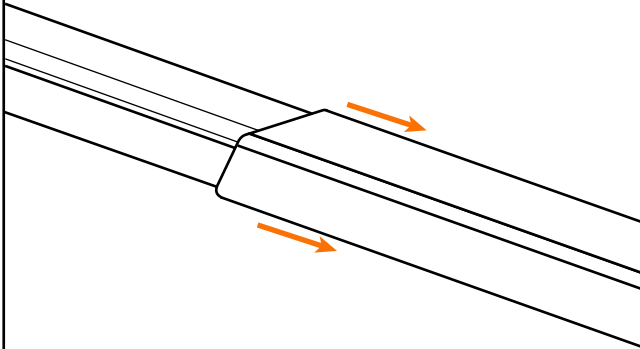
Disconnect the UI PED PWR and usb c cables from the touch pedestal.

12



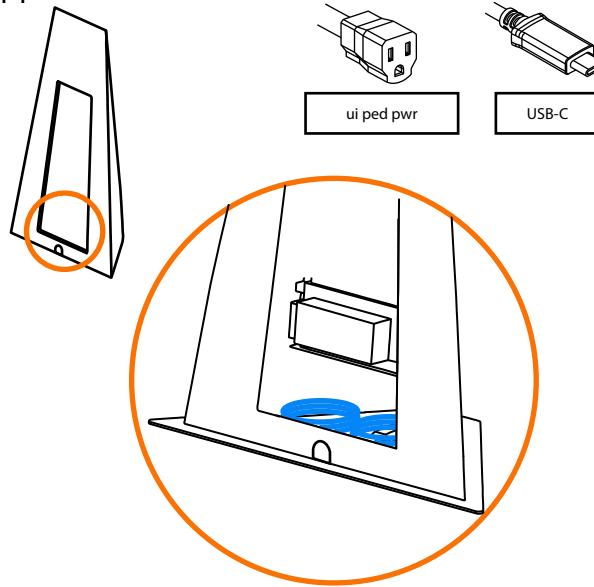
Pull the UI PED PWR and usb c cables out through the opening in the rear of the touch pedestal.

13



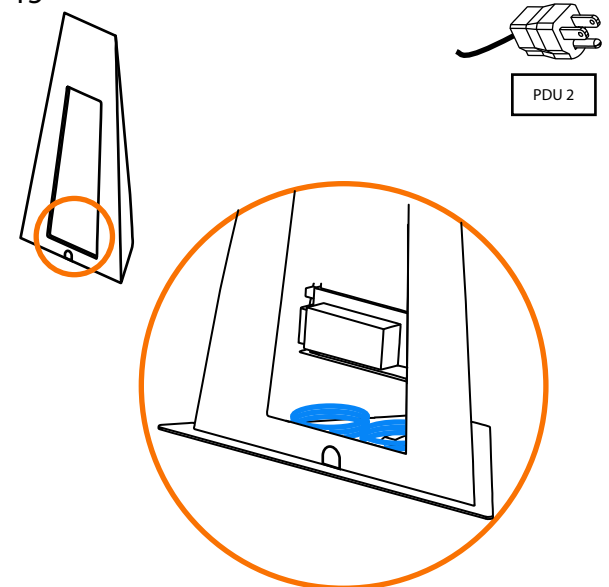
Remove the cover from the cable chase

14



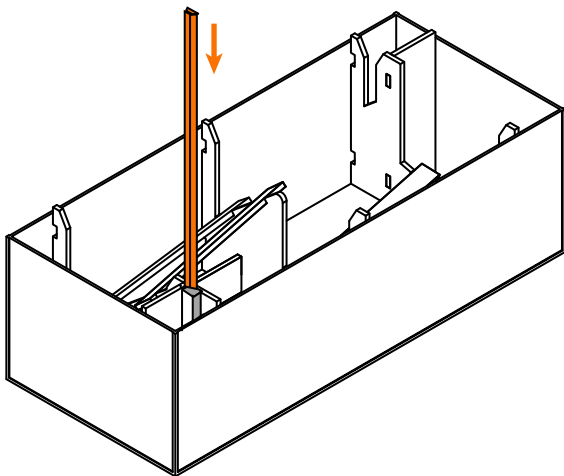
Pull the ui ped pwr and usb c cables back into the cavity of the screen pedestal and coil them.

15



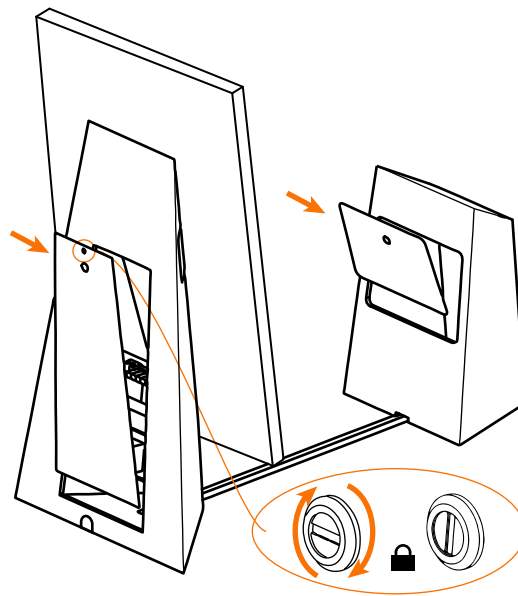
Pull the pdu 2 cord back into the screen pedestal and coil it.

16



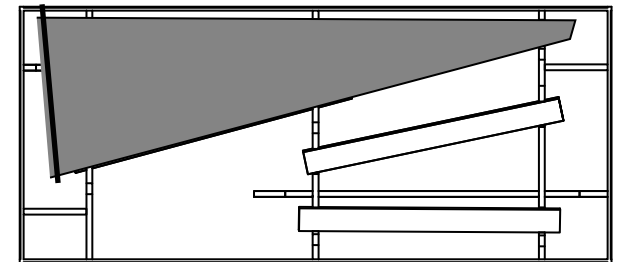
Install the cover on the cable chase and slide it into the pedestal case as shown

17



Place the doors on both pedestals and lock them

18



Place the screen pedestal in the road case as shown door facing out.

COMPLETE