



HBO TAKEDOWN: TIER 2 INSTRUCTIONS

BRDG
BRIDGE STUDIOS

TABLE OF CONTENTS / INTRO

OVERVIEW 3

LAYOUT AND DIMENSIONS 4

LIST OF PARTS..... 5

STICKERS..... 6

GRAPHICS..... 7

UNBOXING..... 8

GRAPHIC WALL ASSEMBLY..... 9-12

GRAPHIC APPLICATION..... 13-14

IPAD STAND SETUP..... 15 -18

IPAD SETUP..... 19-20

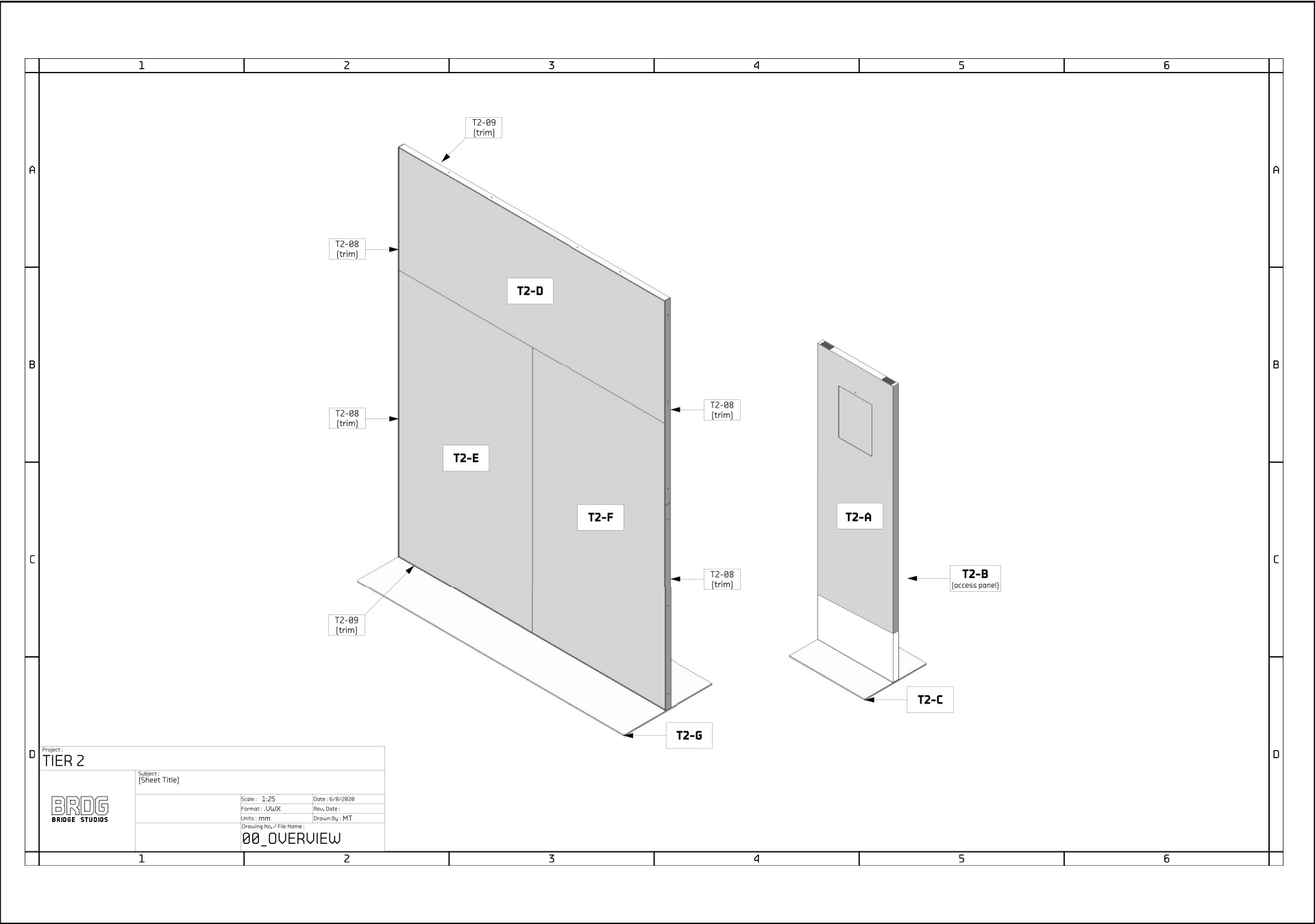


<https://brdg.co/take-down-2>

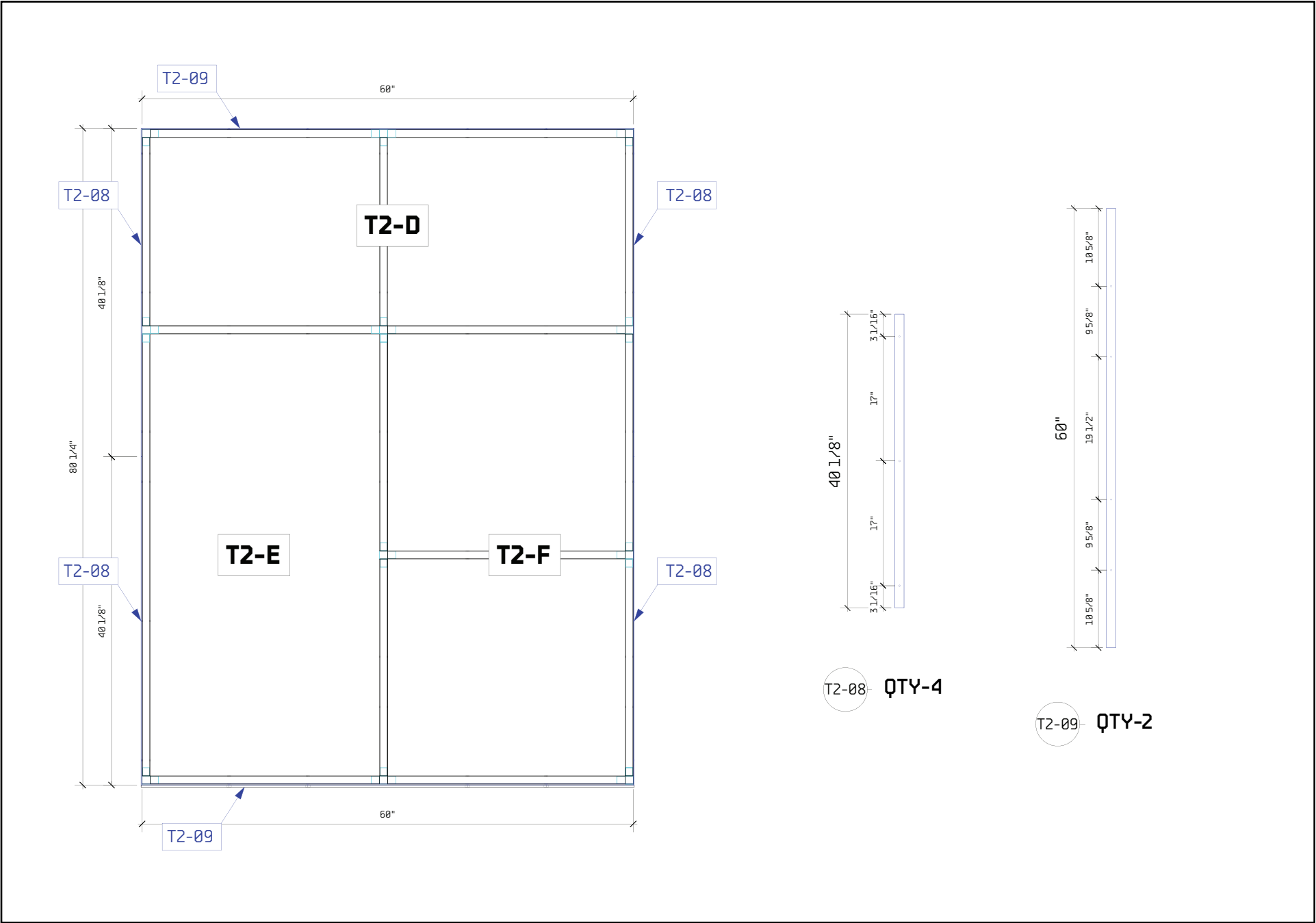
This booklet includes all assembly instructions and information for HBO Max Take Down 2. Scan above QR code or enter URL to access online version.

Contact us:
1-844-999-2734
support@brdg.co

OVERVIEW



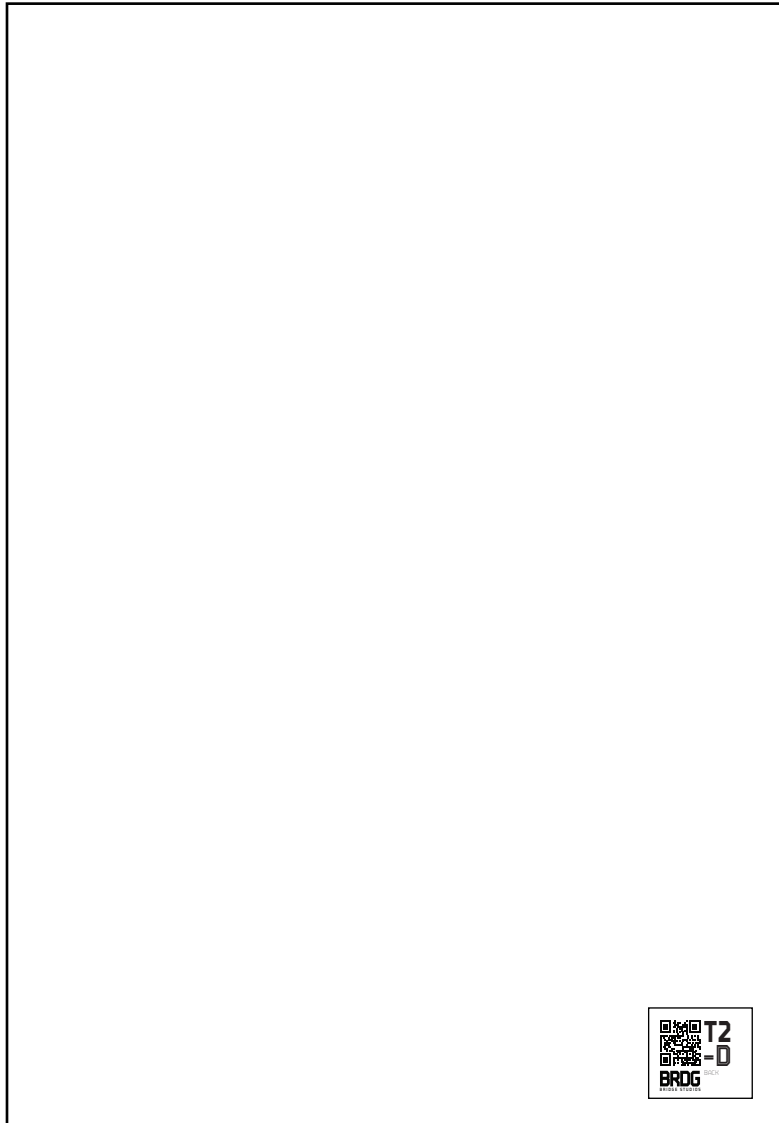
LAYOUT AND DIMENSIONS



LIST OF PARTS

NAME	TYPE	QTY
T2-E	LEFT HAND PANEL	1
T2-F	RIGHT HAND PANEL	1
T2-D	TOP PANEL	1
T-08	SIDE TRIM	4
T2-09	TOP AND BOTTOM TRIM	2
HARDWARE BAG	EQUIPMENT	1
TOOL BAG	EQUIPMENT	1
MAGNETIC PANELS	APPLICABLE GRAPHICS	4
CABINET	METAL FRAE THAT HOLDS IPAD	1
CABINET STAND	BASE ON WHICH CABINET SITS	1
CABINET STAND HARDWARE	HARDWARE THAT CONNECTS CABINET TO STAND	1

STICKERS



- EACH PART IS LABELED WITH A STICKER. THE QR CODE LEADS TO A WEBSITE WITH INFORMATION ABOUT THIS UNIT AND THIS GUIDE AS A DOWNLOADABLE PDF.

- ALL STICKERS ARE POSITIONED IN THE BOTTOM RIGHT HAND CORNER ON THE BACK OF THE PANEL.

- ALL STICKERS ON TRIM ARE TO BE FACING INWARD WHEN THE TRIM IS APPLIED SO THAT THEY ARE NOT VISIBLE AFTER ASSEMBLY.



GRAPHICS



FRONT



BACK

UNBOXING

1. OPEN THE ROLLING CASE AND LAY OUT ALL PARTS FLAT ON THE GROUND.
2. REFER TO PAGE 5 TO MAKE SURE NOTHING IS MISSING.
3. REMOVE GRAPHICS BUT DO NOT REMOVE THEM FROM ROLLS.
4. EACH CASE SHOULD INCLUDE A TOOL AND 2 HARDWARE SETS.



GRAPHIC WALL ASSEMBLY

- LOCATE PARTS T2-E AND T2-F AND PUSH THEM TOGETHER HORIZONTALLY.



GRAPHIC WALL ASSEMBLY

- FIND THE T2.09 TRIM WITH THE LARGER HOLES. ALIGN IT BETWEEN T2-E AND T2-F AND THE THE BASE PLATE SO THAT ALL HOLES MATCH UP.
- THREAD BOTH 3/8-16 X 3 1/2" BOLTS THROUGH THE BASE PLATE AND TRIM, INTO THE BOTTOM OF T2-E AND T2-F.
- ONCE ALL BOLTS ARE THREADED, TIGHTEN THEM WITH PHILIPS A HEAD SCREWDRIVER (ONE IS INCLUDED IF NECESSARY).



GRAPHIC WALL ASSEMBLY

- TILT THE UNIT UPRIGHT ONTO ITS BASE.
- LOCATE PART T2.D. WITH A PERSON ON EITHER SIDE LIFT T2-D INTO THE AIR AND PUSH IT INTO THE TOPS OF T2-E AND T2-F.



GRAPHIC WALL ASSEMBLY

- ALIGN T2-09 TRIM ALONG TOP OF UNIT AND THEN ATTACH WITH 8/32 X 1 1/2" BLACK HEX SCREWS. DO NOT TIGHTEN SCREWS UNTIL YOU ARE SURE ALL TRIM IS PROPERLY ALIGNED. WHEN READY, TIGHTEN WITH AN ALLEN WRENCH (ONE INCLUDED IF NECESSARY).
- DO THE SAME FOR ALL OF THE T2-08 SIDE TRIM.



GRAPHIC APPLICATION

- UNROLL MAGNETIC GRAPHICS. HAVE ONE PERSON HOLD UP EACH SIDE. NEVER BEND OR FOLD GRAPHICS, THEY CREASE EASILY.
- APPLY GRAPHIC STARTING FROM OUTER EDGE AND WORKING INWARD TOWARD THE MIDDLE OF THE UNIT. KEEP ALIGNED WITH OUTER EDGES.



GRAPHIC APPLICATION

- DO THE SAME FOR THE BACK GRAPHICS. MAKE SURE THAT THE LETTERS FROM THE MIDDLE LOGO AND TEXT LINE UP PROPERLY.



IPAD STAND SETUP

- REMOVE SCREWS FROM BACK PANEL WITH ALLEN WRENCH.
- UNLOCK THE TOP LOCK WITH A FLAT HEAD SCREW DRIVER (ONE INCLUDED IF NECESSARY).
- REMOVE BACK PANEL FROM UNIT



IPAD STAND SETUP

- FIND T2 HARDWARE BAG WITH BLACK PLATES AS WELL AS CABINET STAND.
- GENTLY OPEN MAGNETIC PANEL ON BACK OF STAND.



IPAD STAND SETUP

- PLACE CABINET ON TOP OF THE STAND. MAKE SURE THE UNOPENED PART OF THE STAND IS FACING FORWARD.
- ALIGN BLACK PLATES FROM THE HARDWARE BAG WITH THE HOLES DRILLED IN THE BOTTOM OF THE CABINET AND TOP OF THE STAND.



IPAD STAND SETUP

- FASTEN STAND AND CABINET TOGETHER BY THREADING 1/4-20" BOLTS THROUGH THE PLATE, CABINET AND STAND, AND THEN TIGHTENING WITH PROVIDED WRENCH AND SCREWDRIVER.
- PLUG CHARGER IN CABINET INTO POWER SOURCE IN STAND. REPLACE MAGNETIC BACK PLATE.



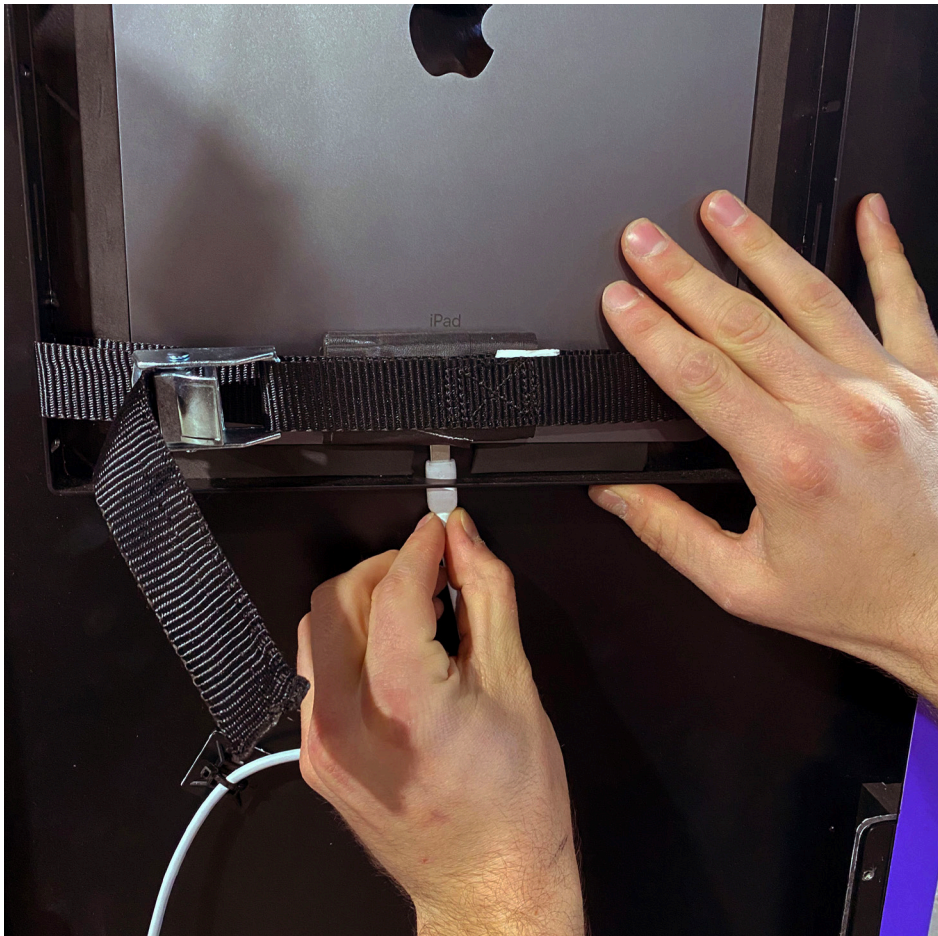
IPAD SETUP

- PLACE IPAD SNUGGLY BETWEEN FOAM.
- TIGHTEN CAM STRAPS UNTIL IT IS SECURE.
- REPLACE BACK PANEL. TIGHTEN SCREWS WITH ALLEN WRENCH AND RE-LOCK TOP.



IPAD SETUP

- PLUG CHARGER INTO IPAD AND MAKE SURE IT IS CHARGING.
- SCREW BACK PLATE BACK ONTO CABINET.





ALL DOONE!